

# FCAI

Finnish  
Center for  
Artificial  
Intelligence



Aalto University



UNIVERSITY OF HELSINKI



FLAGSHIP PROGRAMME

# What is FCAI?

- Finnish Center for Artificial Intelligence  
FCAI aims to create **new types of AI**, which can operate with humans in the complex world, and to renew the Finnish industry and society with this Real AI
- FCAI is a **community of experts** that brings together top talents in academia, industry and public sector to solve real-life problems using the Real AI

## World-class AI research in Finland

- International hub supporting Finland's national AI program
- Academy of Finland research and impact flagship for 2019-26, volume 250 M€
- Initiated by Aalto University, University of Helsinki, and VTT Technical Research Centre of Finland

## FCAI in numbers - year 2020

- 60 Professors and their groups
- 45 M€ funding
- 688 publications
- 30 Doctoral degrees
- 252 Master's degrees
- 20+ collaboration partners and 350+ ecosystem members

# FCAI at the core of European AI research

- FCAI is a global player and one of the leading European AI centres
- ELLIS is a network for the best European machine learning research
- FCAI hosts ELLIS Unit Helsinki (see [video](#))
- FCAI coordinates ELLIS-originated ELISE – European Network of AI Excellence Centres – which builds and executes a European Strategic Research Agenda in AI



# Want to learn more?

- FCAI's research agenda:  
[fcai.fi/mission](https://fcai.fi/mission)  
[fcai.fi/research](https://fcai.fi/research)
- List of FCAI's researchers:  
[fcai.fi/researchers](https://fcai.fi/researchers)
- Help in the application process:  
[contact@fcai.fi](mailto:contact@fcai.fi)

## Joint methodological goal:

AI-assisted decision-making, design, and modeling

## FCAI Research Programs →

- Agile probabilistic AI
- Simulator-based inference
- Deep learning
- Privacy and security
- Interactive AI
- Autonomous AI
- AI in society

## FCAI Highlight Programs →

- Modeling tools made easy
- Healthcare
- Service assistant
- Atmospheric AI
- AI and materials design

# Selected FCAI highlights

Fundamental AI research creates solutions to the needs of people, society, and companies

## AI for plant breeding

Fundamental research producing applications far beyond the original purposes

SEE VIDEO →



## Privacy-preserving synthetic twin to a sensitive data set

Help for researchers in many disciplines

SEE VIDEO →



## Speech recognition technology for Finnish

Quick adaptation of results in industry

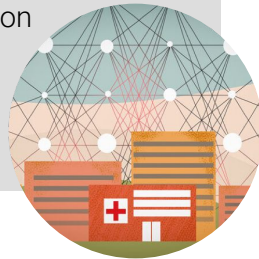
SEE VIDEO →



## Tackling societal questions

Trustworthy practices for utilizing Finnish data on health and social services

SEE VIDEO →



## Computer vision to make industrial premises safer

Results transferrable to other applications

SEE VIDEO →



## Turning a regular smartphone into a super-accurate camera

Application potential of AI in different fields

SEE VIDEO →



# Stay in touch



[Website](#) →



[Monthly newsletter](#) →



[Twitter](#) →



[LinkedIn](#) →



[YouTube](#) →

